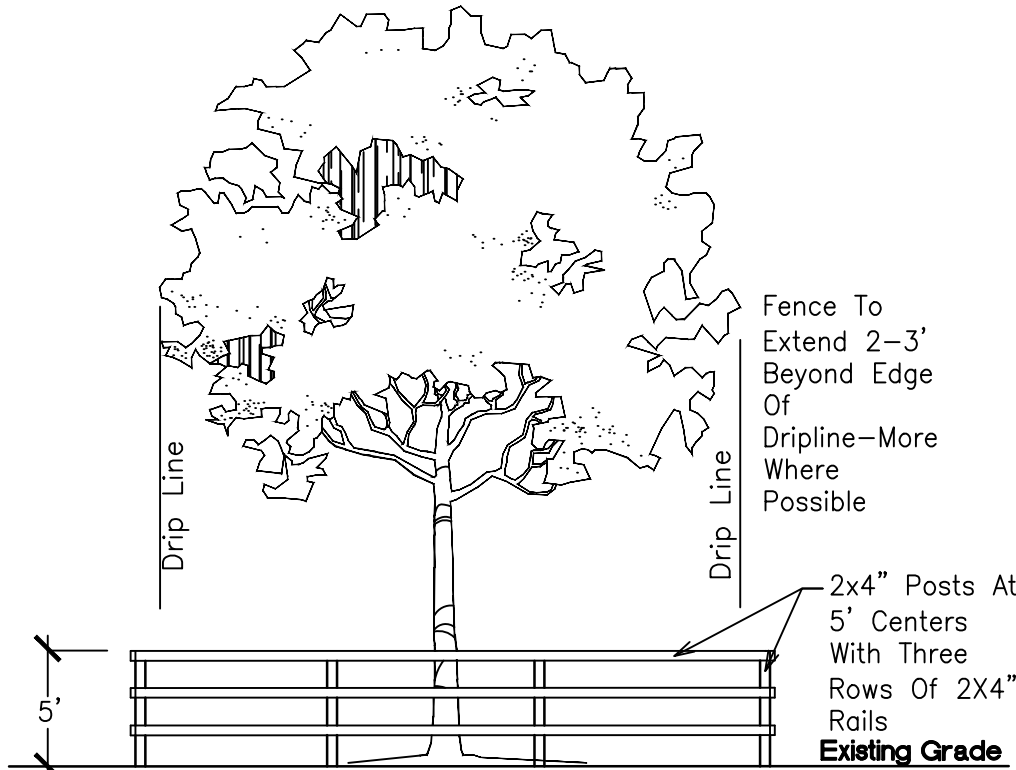
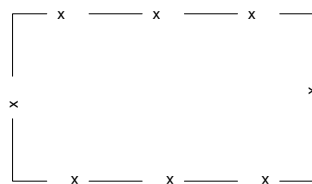


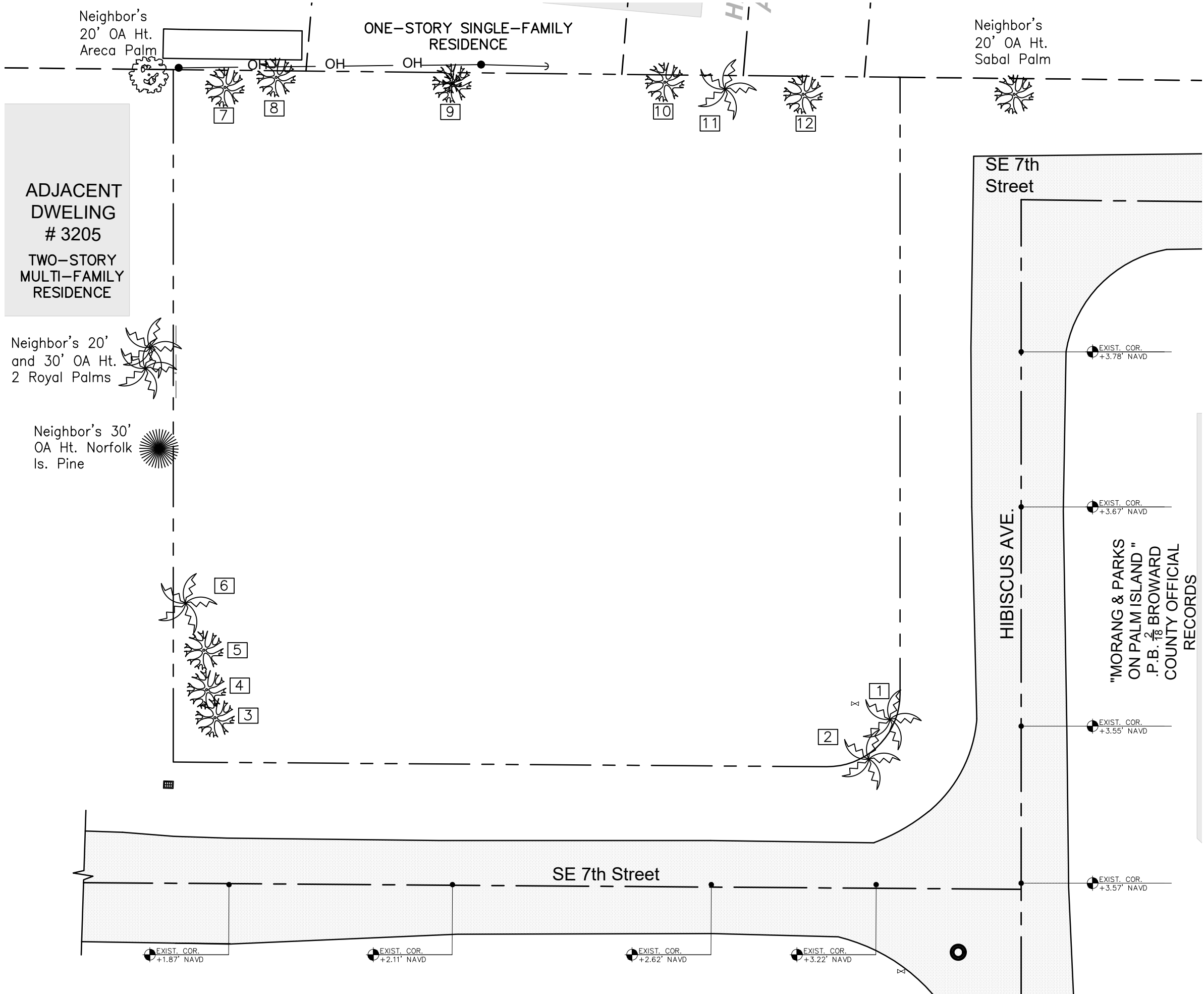
Before Construction Begins,
Contractor to Install and Maintain
Tree Protection Fencing Around
Existing Trees As Shown. See
Existing Tree Protection Detail
This Sheet



NOTE:
From The Start And Throughout The Duration Of The Project,
Contractor To Install A Wood Fence Barrier To Form A Continuous
Circle Around The Tree Or All Existing Trees To Remain.

Contractor Shall Take Extra Care During Earthwork And Utility
Operations To Protect All Existing Trees And Shall Be Responsible To
Replace Any Damaged Trees During Construction.

EXISTING TREE PROTECTION DETAIL
NTS

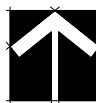
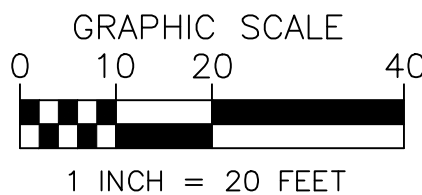


Existing Tree List

Appraised Value = FL Chapter ISA Rule 14-40.303 FL Administrative Code
Replacement Cost Method

Case/Location: 441 NW 27th Avenue, Pompano Beach, FL
Date: 12/15/2022
Appraiser: Thomas White, ASLA-ISA, Florida ISA Arborist #FL-5248A

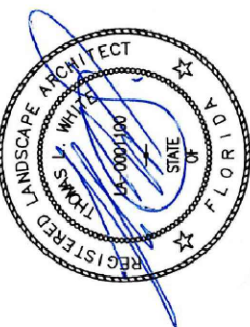
Tree #	Species (Botanical Name / Common Name)	Height (Feet)	Spread (Feet)	DBH (Inches)	Condition	Tree Wholesale Cost	X Multiplier	= Replacement Cost	/ by 28=Price (per Sq. Inch of Trunk Area)	Trunk Area (In Inches)	= Appraised Value	X Diminution % (0% for Cat 1 Invasive)	= Mitigation Cost	Disposition
1	Syagrus romanzoffiana / Queen palm	14	8	8	Poor	\$120	2.5	\$300.0	\$10.7	50.2	\$538	0.25	\$135	Remove
2	Syagrus romanzoffiana / Queen palm	20	15	12	Fair-Poor	\$120	2.5	\$300.0	\$10.7	113.0	\$1,211	0.32	\$388	Remove
3	Sabal palmetto / Cabbage Palm	25	12	12	Good	\$125	2.5	\$312.5	\$11.2	113.0	\$1,262	0.70	\$883	Remove
4	Sabal palmetto / Cabbage Palm	20	12	12	Good	\$125	2.5	\$312.5	\$11.2	113.0	\$1,262	0.70	\$883	Remove
5	Sabal palmetto / Cabbage Palm	15	12	12	Good	\$125	2.5	\$312.5	\$11.2	113.0	\$1,262	0.70	\$883	Remove
6	Roystonea elata / Royal Palm	40	15	18	Fair	\$300	2.5	\$750.0	\$26.8	254.3	\$6,813	0.48	\$3,270	Remove
7	Sabal palmetto / Cabbage Palm	25	12	12	Good	\$125	2.5	\$312.5	\$11.2	113.0	\$1,262	0.70	\$883	Remove
8	Sabal palmetto / Cabbage Palm	30	12	12	Good	\$125	2.5	\$312.5	\$11.2	113.0	\$1,262	0.70	\$883	Remove
9	Sabal palmetto / Cabbage Palm	20	12	12	Good	\$125	2.5	\$312.5	\$11.2	113.0	\$1,262	0.70	\$883	Remove
10	Ravenala madagascariensis / Travelers Tree	30	12	22	Poor	\$175	2.5	\$437.5	\$15.6	379.9	\$5,937	0.22	\$1,306	Remove
11	Syagrus romanzoffiana / Queen palm	25	10	8	Poor	\$120	2.5	\$300.0	\$10.7	50.2	\$538	0.25	\$135	Remove
12	Sabal palmetto / Cabbage Palm	20	12	12	Good	\$125	2.5	\$312.5	\$11.2	113.0	\$1,262	0.70	\$883	Remove
\$11,415														
Diminution %:														
81-1.0 (81-100%) Very Good-Specimen														
61-80 (61-80%) Good-Healthy														
41-60 (41-60%) Fair														
21-40 (21-40%) Poor														
01-20 (1-20%) Very Poor														
0 Cull, Dead, Cat I or II Invasive														



DRAWN:
TW
CHECKED:
TW
DATE:
12-10-2022
SCALE: 1"=20'

Sheet No.
L-1.1
Sheet 1 Of 3

Tree Survey / Appraisal
Hibiscus Park Townhomes
3213 SE 7th Street
Pompano Beach, FL 33062



REVISIONS

THOMAS WHITE, ASLA-ISA
LANDSCAPE ARCHITECT, LEED GREEN
ASSOCIATE, CERTIFIED ARBORIST
2600 NE 27th AVENUE
FORT LAUDERDALE, FLORIDA 33306
tcawhite@ellsouth.net
954-253-2265